

Vertical distribution of aerosols in dust storms during the Arctic winter

Pavla Dagsson-Waldhauserova^{1,2,*}, Jean-Baptiste Renard³, Haraldur Olafsson^{4,5}, Damien Vignelles³, Gwenaël Berthet³, Nicolas Verdier⁶, Vincent Duverger³

¹Agricultural University of Iceland; Faculty of Environmental Sciences, Hvanneyri; Borgarnes; IS 311; Iceland; *pavla@lbhi.is

²Czech University of Life Sciences Prague; Faculty of Environmental Sciences; Department of Ecology; Prague; 160 00; Czech Republic

³LPC2E-CNRS, 3A avenue de la recherche scientifique, 45071 Orléans cedex 2, France

⁴University of Iceland; Department of Physical Sciences; Reykjavík; Iceland; IS 101

⁵Icelandic Meteorological Office, Reykjavik, Iceland

⁶Centre National d'Etudes Spatiales, 18 avenue Edouard Belin, 31055 Toulouse cedex, France

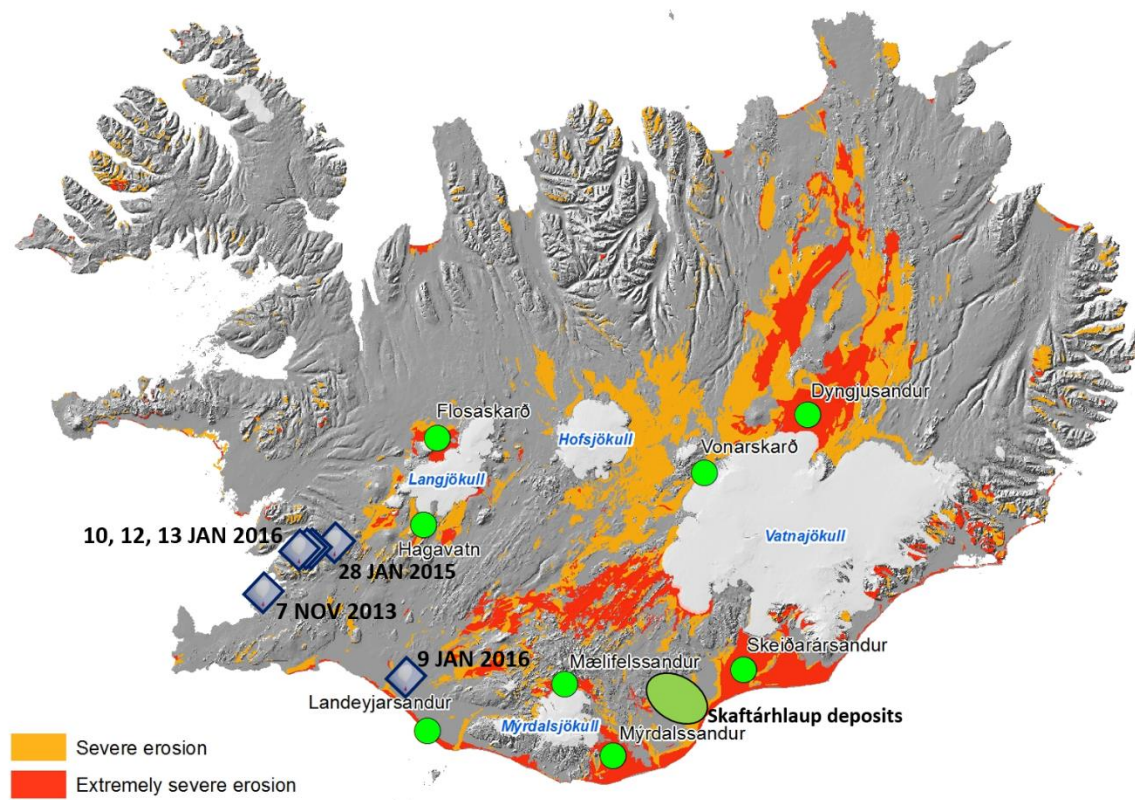


Figure S1| Locations of LOAC balloon launches (squares), dust hot spots (circles) and Skafta jokulhlaup deposits (ellipse). Sandy deserts in Iceland are marked according to their erosion severity (yellow: severe erosion; red: extremely severe erosion). Map: AUI Soil Erosion Database, prepared by Sigmundur Helgi Brink and Olafur Arnalds, Agricultural University of Iceland.

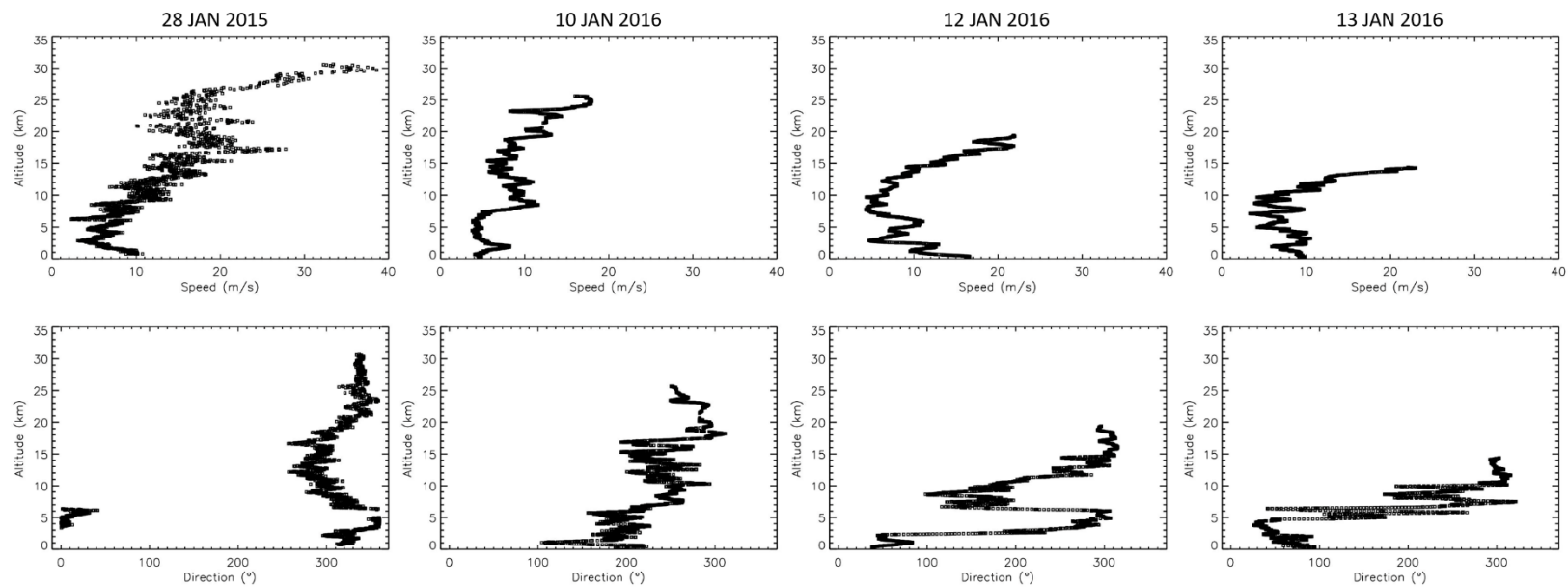


Figure S2| Vertical profiles of wind speed (upper row) and wind direction (lower row) obtained during LOAC launches on 28th January 2015 and 10th, 12th and 13th January 2016.